

Sample Ballot

February Special
February 11, 2020
San Juan County

Precinct 101 Friday Harbor NW
Page 1 of 1

Instructions

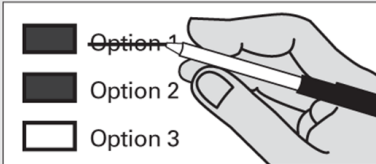
How to vote



Use a dark blue or black ink pen to completely fill in the box to the left of your choice. Do not use pencil.

Vote for one in each race. If you vote for more than one, no votes will be counted for that race.

If you make a mistake



Draw a line through the entire measure response.

Then you may make another choice.

VoteWA

Visit the VoteWA website for your online voters' guide and more.

voter.votewa.gov



Who donates to campaigns

View contributions for candidates and measures

Public Disclosure Commission
www.pdc.wa.gov
Toll Free (877) 601-2828

Your ballot must be postmarked by February 11 election day or deposited in a ballot drop box by 8 pm election night.

No stamp needed to return your ballot!



San Juan County

Proposition No. 1 - Sales and Use Tax for Emergency Communication Systems and Facilities

The San Juan County Council adopted Resolution No. 49-2019 concerning the imposition of a sales and use tax for emergency communication systems and facilities. This proposition would authorize the imposition of a countywide sales and use tax of five one-hundredths of one percent (0.05%) without an expiration date; and a second countywide sales and use tax of fifteen one-hundredths of one percent (0.15%) that expires after 60 months, with the revenue therefrom used for all expenses provided by statute for the design, financing, acquisition, construction, operation, remodeling and improvement of emergency communication systems and facilities.

Shall this proposition be approved?

Yes

No

San Juan Island School District #149

Proposition No. 1 - Capital Levy for School Facilities & Technology

The Board of Directors adopted Resolution No. 19-012 concerning a proposition to fund improvements to school facilities and technology systems. This proposition authorizes the District to levy the following excess taxes, in place of an expiring levy, upon taxable property within the District in support of its Capital Projects Fund:

Collection Year	Estimated Levy Rate per \$1,000 Assessed Value	Total Amount
2021	\$.3917919	\$1,353,750
2022	\$.3917919	\$1,353,750
2023	\$.3917919	\$1,353,750
2024	\$.3917919	\$1,353,750

Should this proposition be approved?

Yes

No

38251

This page intentionally left blank