

Instructions

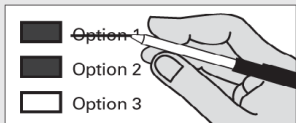
How to vote



Use a dark blue or black ink pen to completely fill in the box to the left of your choice. Do not use pencil.

Vote for one in each race (EXCEPT for Charter Review Commissioner). If you vote for more than one, no votes will be counted for that race.

If you make a mistake



Draw a line through the entire measure response or candidate's name.

Then you may make another choice.

Optional write-in



To vote for a candidate not listed, print the name on the blank line provided above 'Write-in' and fill in the box.



Visit the VoteWA website for your online voters' guide and more

votewa.gov



Who donates to campaigns

View contributors for candidates and measures

Public Disclosure Commission

www.pdc.wa.gov

Toll Free (877) 601-2828

Your ballot must be postmarked by November 3, election day, or deposited in a ballot drop box by 8 pm election night.

No stamp needed to return your ballot!



Referendum Measure

Referendum Measure No. 90

The legislature passed Engrossed Substitute Senate Bill 5395 concerning comprehensive sexual health education. This bill would require school districts to adopt or develop, consistent with state standards, comprehensive age-appropriate sexual health education, as defined, for all students, and excuse students if their parents request.

Should this bill be:

Approved

Rejected

Advisory Votes

**Advisory Vote No. 32
Engrossed Substitute Senate Bill 5323**

The legislature imposed, without a vote of the people, a retail sales tax on pass-through charges retail establishments collect for specified carryout bags, costing \$32,000,000 in its first ten years, for government spending.

This tax increase should be:

Repealed

Maintained

**Advisory Vote No. 33
Substitute Senate Bill 5628**

The legislature imposed, without a vote of the people, a tax on heavy equipment rentals to consumers by heavy equipment rental property dealers, costing \$103,000,000 in its first ten years, for government spending.

This tax increase should be:

Repealed

Maintained

**Advisory Vote No. 34
Engrossed Substitute Senate Bill 6492**

The legislature increased, without a vote of the people, the business and occupation tax rate for certain businesses, while reducing certain surcharges, costing \$843,000,000 in its first ten years, for government spending.

This tax increase should be:

Repealed

Maintained

**Advisory Vote No. 35
Engrossed Senate Bill 6690**

The legislature increased, without a vote of the people, the business and occupation tax on manufacturers of commercial airplanes, including components or tooling, costing \$1,024,000,000 in its first ten years, for government spending.

This tax increase should be:

Repealed

Maintained

Proposed Constitutional Amendment

Engrossed Senate Joint Resolution No. 8212

The legislature has proposed a constitutional amendment on investment of public funds. This amendment would allow public money held in a fund for long-term care services and supports to be invested by governments as authorized by state law, including investments in private stocks.

Should this constitutional amendment be:

Approved

Rejected

Partisan Offices

Federal Races

President / Vice President of the United States

4-year term - vote for one

Joseph R. Biden / Kamala D. Harris
Democratic Party Nominees

Donald J. Trump / Michael R. Pence
Republican Party Nominees

Jo Jorgensen / Jeremy "Spike" Cohen
Libertarian Party Nominees

Howie Hawkins / Angela Walker
Green Party Nominees

Gloria La Riva / Sunil Freeman
Socialism and Liberation Party Nominees

Alyson Kennedy / Malcolm M. Jarrett
Socialist Workers Party Nominees

Write-in

READ: Each candidate for President and Vice President is the official nominee of a political party. For other partisan offices, each candidate may state a political party that he or she prefers. A candidate's preference does not imply that the candidate is nominated or endorsed by the party, or that the party approves of or associates with that candidate.

Washington State Races

**Congressional District 2
U.S. Representative**

2-year term - vote for one

Rick Larsen
(Prefers Democratic Party)

Timothy S. Hazelo
(Prefers Republican Party)

Write-in

Governor

4-year term - vote for one

Jay Inslee
(Prefers Democratic Party)

Loren Culp
(Prefers Republican Party)

Write-in

Lt. Governor

4-year term - vote for one

Denny Heck
(Prefers Democratic Party)

Marko Liias
(Prefers Democratic Party)

Write-in

Secretary of State

4-year term - vote for one

Kim Wyman
(Prefers Republican Party)

Gael Tarleton
(Prefers Democratic Party)

Write-in

State Treasurer

4-year term - vote for one

Mike Pellicciotti
(Prefers Democratic Party)

Duane A. Davidson
(Prefers Republican Party)

Write-in

State Auditor

4-year term - vote for one

Pat (Patrice) McCarthy
(Prefers Democratic Party)

Chris Leyba
(Prefers Republican Party)

Write-in

Attorney General

4-year term - vote for one

Bob Ferguson
(Prefers Democratic Party)

Matt Larkin
(Prefers Republican Party)

Write-in

Commissioner of Public Lands

4-year term - vote for one

Hilary Franz
(Prefers Democratic Party)

Sue Kuehl Pederson
(Prefers Republican Party)

Write-in

Nonpartisan Office

**Superintendent of Public
Instruction**

4-year term - vote for one

Chris Reykdal

Maia Espinoza

Write-in

Partisan Offices

Insurance Commissioner

4-year term - vote for one

Mike Kreidler
(Prefers Democratic Party)

Chirayu Avinash Patel
(Prefers Republican Party)

Write-in

Legislative District 40

State Senator

4-year term - vote for one

Elizabeth (Liz) Lovelett
(Prefers Democratic Party)

Charles Carrell
(Prefers Republican Party)

Write-in

State Representative Position 1

2-year term - vote for one

Debra Lekanoff
(Prefers Democratic Party)

Write-in

State Representative Position 2

2-year short & full term - vote for one

Alex Ramel
(Prefers Democratic Party)

Russ Dzialo
(Prefers Republican Party)

Write-in

Nonpartisan Offices

San Juan County Races

**San Juan County Council
Residency District Commissioner
1**

4-year term - vote for one

Christine Minney

Ryan T. Palmateer

Write-in

**San Juan County Council
Residency District Commissioner
2**

4-year term - vote for one

Cindy Wolf

Rick Hughes

Write-in

Sample Ballot

2020 General Election
November 3, 2020
San Juan County

Precinct 101 Friday Harbor NW
Page 3 of 3

1
54220

**Council Residency District 1
Charter Review Commissioner**

1-year term - VOTE FOR NINE

Kevin Loftus

Greg Lee

Paul Dossett

John Geniuch

Maureen See

Bill Appel

Nicholas Power

Patty Garcia

Bob Jarman

Thomas Starr

Kyle Davies

John T. Manning

Richard Grout

David Meiland

Dave Anderson

David Dehlendorf

Write-in

**Council Residency District 2
Charter Review Commissioner**

1-year term - VOTE FOR SIX

Kevin Ranker

Tony P. Ghazel

Janet Brownell

Margaret Manning

Greg Ayers

Olivia Roseberry

D. N. Kinsey

Anne Marie Shanks

Sharon Abreu

Minor Lile

Tim Blanchard

Write-in

**Council Residency District 3
Charter Review Commissioner**

1-year term - VOTE FOR THREE

Jane Fuller

Megan Constable

Robert A. OConnell

Liz Lafferty

Julienne Battalia

Monico L. Mackinnon

Write-in

Supreme Court Justice Position 3

6-year short & full term - vote for one

Dave Larson

Raquel Montoya-Lewis

Write-in

Supreme Court Justice Position 4

6-year term - vote for one

Charles W. Johnson

Write-in

Supreme Court Justice Position 6

2-year unexpired term - vote for one

Richard S. Serns

G. Helen Whitener

Write-in

Supreme Court Justice Position 7

6-year term - vote for one

Debra L. Stephens

Write-in

San Juan Superior Court Judge

4-year term - vote for one

Kathryn C. Loring

Write-in

**Lopez Solid Waste Disposal District
Proposition No. 1 - Excess Property Tax Levy**

The Governing Body of the Lopez Solid Waste Disposal District adopted Resolution No. 27-2020 concerning an excess levy for the district. This proposition would authorize the district to generate \$105,000 by continuing a levy of excess taxes upon all taxable property within the district in an amount estimated to be \$0.08322 per \$1,000 assessed valuation for collection in one year -- 2021 -- for the purpose of funding operations and capital improvements of the district.

Shall the proposition be approved?

Yes

No

This page intentionally left blank