

Sample Ballot

**2022 February Special
February 8, 2022
San Juan County**

**Precinct 101 Friday Harbor NW
Page 1 of 1**

Instructions

How to vote

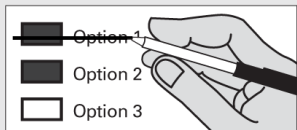


Use a dark blue or black ink pen to completely fill in the box to the left of your choice.

Do not use pencil.

Vote for one in each race/measure. If you vote for more than one, no votes will be counted for that race/measure.

If you make a mistake



Draw a line through the entire race/measure response. Then you may make another choice.

Do not use white-out.



For your online voter's guide, ballot status, and to update voter information, visit votewa.gov.

i Who donates to campaigns

View contributors for candidates and measures at:
www.pdc.wa.gov
Public Disclosure Commission
Toll Free (877) 601-2828

Your ballot must be postmarked by February 8, election day, or deposited in a ballot box by 8 pm, election night.

No stamp needed to return your ballot!



San Juan Island School District No. 149

Proposition No. 1 - Replacement Educational Programs and Operations Levy

The Board of Directors of San Juan Island School District No. 149 adopted Resolution No. 21-010 concerning this proposition to levy taxes. This proposition would authorize the District to levy the following excess taxes, in place of an expiring levy, on all taxable property within the District, to support the District's educational programs and operational expenses not funded by the State of Washington including instruction, special education, and operational expenses, an expenditure plan of which has been submitted and approved by the Superintendent of Public Instruction:

Collection Year	Estimated Levy Rate per \$1,000 of Assessed Valuation	Total Amount
2023	\$0.6770	\$2,787,082
2024	\$0.7251	\$2,984,965
2025	\$0.7766	\$3,196,897
2026	\$0.8317	\$3,423,877

Should this proposition be approved?

- Yes
 No

San Juan County Public Hospital District No. 1

Proposition No. 1 - Renewal of Six-Year Emergency Medical Services Property Tax Levy

Will San Juan County Public Hospital District No. 1 be authorized to impose regular property tax levies of \$0.45 or less per \$1,000.00 of assessed valuation for six consecutive years?

- Yes
 No

This page intentionally left blank